

PLUS HEARTY RECIPES FOR A COUNTRY WEEKEND + HOW TO CHOOSE A FRUIT TREE

HOUSE & GARDEN®

November
2018
£4.90

Houses with history

RESTORED GEORGIAN SPLENDOUR IN SUSSEX *and*
MODERN GLAMOUR AT A VICTORIAN VILLA IN LONDON



INSIDER INSIGHT

IDEAS FOR
YOUR
ENTRANCE
HALL
*Choosing the
right taps*
THE LATEST
WALLPAPER
TRENDS

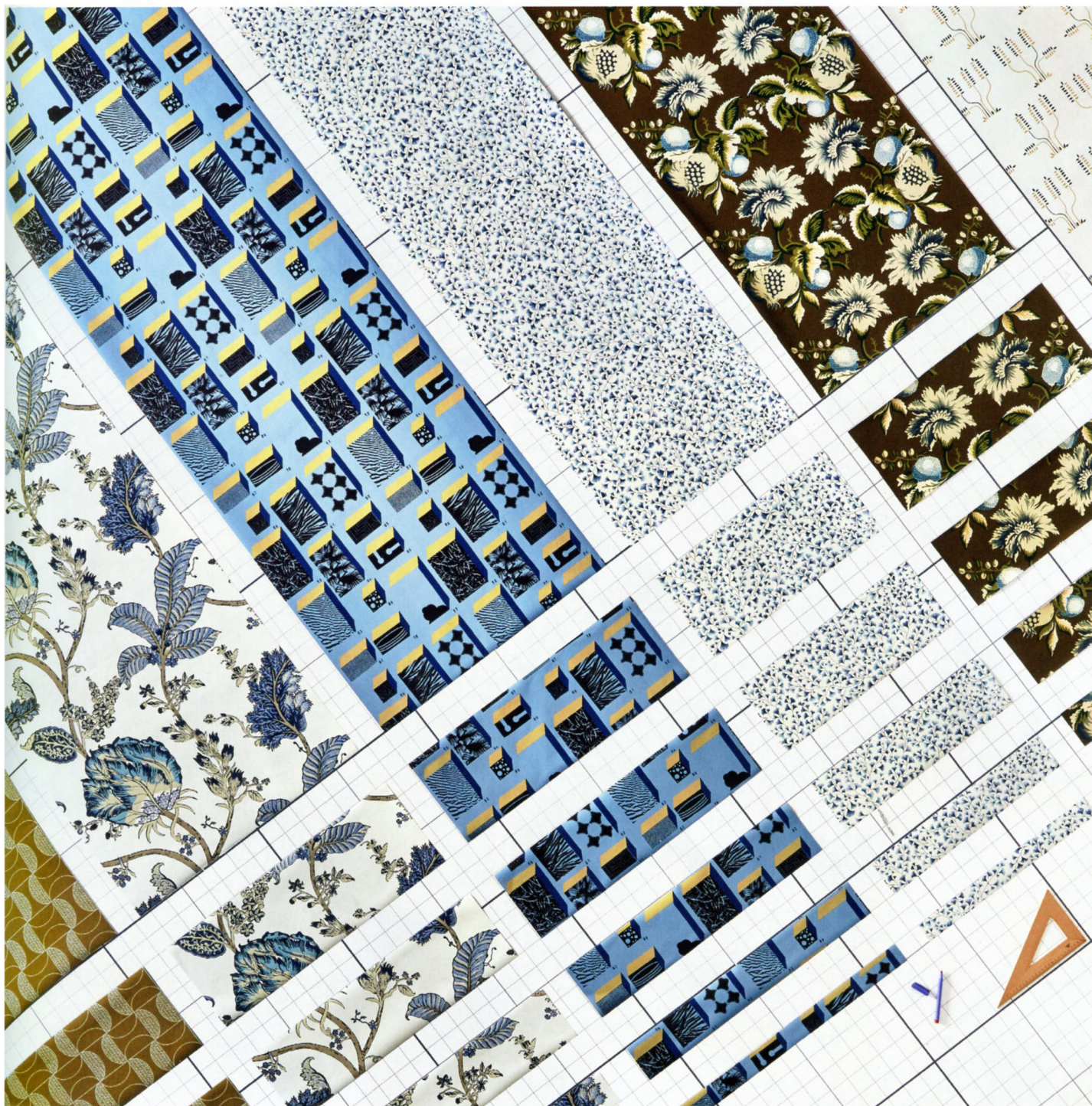


ART SPECIAL

WHERE TO GO,
WHAT TO BUY
AND HOW TO
DISPLAY IT



DECORATING



Follow the rules

RUTH SLEIGHTHOLME lines up the best of the new wallpaper collections

FROM LEFT 'Shinku' (turmeric), by Scion, 53cm wide, £45, from The Style Library. 'Kalamkari Vine' (blue and white), by Anna French, 68cm wide, £99, from Thibaut. 'Squares' (smalt blue), by Gianpaolo Pagni, 68cm wide, £200, from Hermès. 'Maidenhair' (115/6019), 53cm wide, £85, from Cole & Son. 'Jessup' (sepia/indigo), by Oscar de la Renta for Lee Jofa, 61cm wide, £1,024, from GP&J Baker. 'Topanga' (navy and ochre on white), by Maison C, 76cm wide, £115.29 a metre, from George Spencer Designs ▷